

ROTACAM

Encoder with integrated cam programmer

series

ASR58



ASR58



www.lika.biz

- manual
- software
- datasheet

ENVIRONMENTAL SPECIFICATIONS

Shock:	100 g, 6 ms (acc. to MIL STD 202F)
Vibrations:	10 g, 5-2000 Hz (acc. to MIL STD 202F)
Operating temperature range:	-20°C +70°C (-4°F +158°F)
Storage temperature range:	-20°C +80°C (-4°F +176°F) (98% R.H.without condensation)
Protection:	IP65

MECHANICAL SPECIFICATIONS

Dimensions:	see drawing
Shaft:	Ø 6, 8, 9.52, 10, 12 mm
Shaft loading (axial and radial):	40 N max.
Shaft rotational speed:	6000 rpm max (up to 6000 rpm for short periods)
Starting torque at 20°C:	< 0,2 Ncm (typical)
Moment of inertia:	~95 gcm ²
Bearing life:	400x10 ⁶ rev. min. (10 ⁹ rev. min. with shaft loading of 20 N max.)
Weight:	~0,3 kg (10,6 oz)
Electrical connections: (see on page 62)	EDA 15P and EDB 25P DSub connectors

ELECTRICAL SPECIFICATIONS

Information/rev.:	3600
Resolution:	0,1°
Nr. of cams per program:	120
Nr. of programs:	16
Power supply:	+10V +30V
Power consumption:	2 W
Output:	Push-Pull
Output current (per channel):	100 mA max.
Output frequency:	100 kHz max.
Cam delay:	1µsec
Supplementary output:	Pulse output for speed testing (LSB Binary) Fault signal indicating output status
Protection:	Protected against inversion of polarity and short-circuit.
Optoelectronic life:	100.000 h min.
Option:	• Analog output (programmable on output nr.1) 0V +10V , 0V +5V , -5V +5V

MATERIALS

Housing:	non corroding
Flange:	non corroding
Bearings:	ABEC 5
Shaft:	stainless steel, non-magnetic
Light source:	GaAl diodes

ELECTRICAL CONNECTIONS

25 pin DSub mating connector

1	OUT1	14	OUT14
2	OUT2	15	OUT15
3	OUT3	16	OUT16
4	OUT4	17	Load Prg
5	OUT5	18	Sel. Prg 2 ⁰
6	OUT6	19	Sel. Prg 2 ¹
7	OUT7	20	Sel. Prg 2 ²
8	OUT8	21	Sel. Prg 2 ³
9	OUT9	22	Zero setting
10	OUT10	23	Complementary
11	OUT11	24	+10Vdc +30Vdc
12	OUT12	25	0 Vdc
13	OUT13		

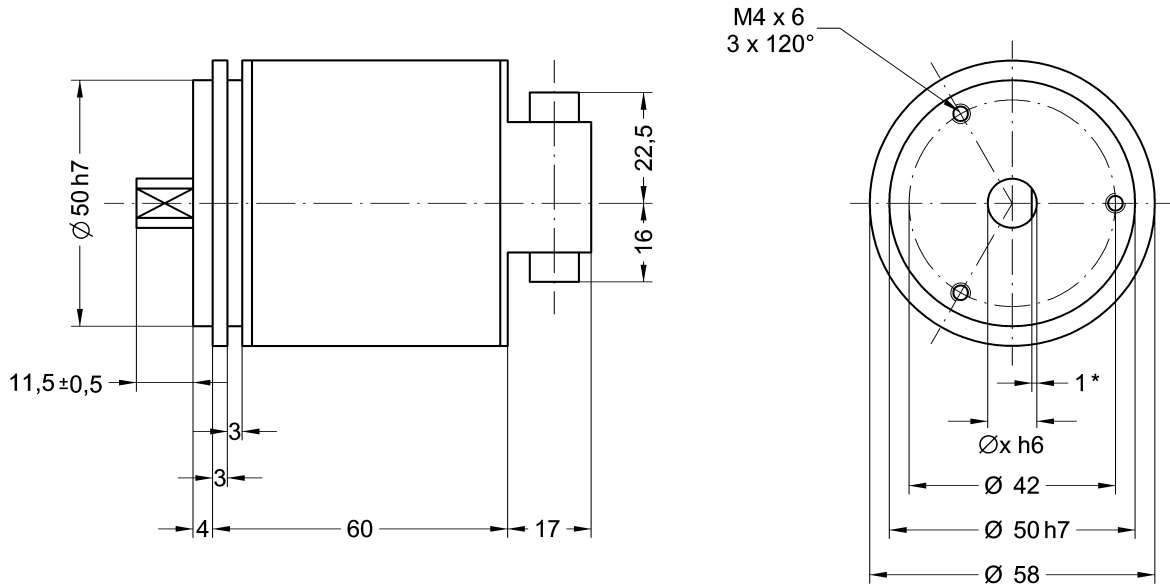
15 pin DSub mating connector

1	N.C.	9	N.C.
2	N.C.	10	N.C.
3	N.C.	11	GND
4	Analogue output	12	RXD (RS232)
5	Speed	13	TXD (RS232)
6	GND	14	+10Vdc +30Vdc
7	Fault	15	0 Vdc
8	GND (RS232)		

ACCESSORIES

EDB 25S:	25 pin DSub mating connector
EDA 15S:	15 pin DSub mating connector
PAN/PGF:	flexible couplings
LKM-386:	fixing clamps

Specifications subject to changes without prior notice



* = 0,5mm with Ø6 shaft

ASR58

ORDERING CODE

ADDITIONAL CODE (indicate only if necessary)

